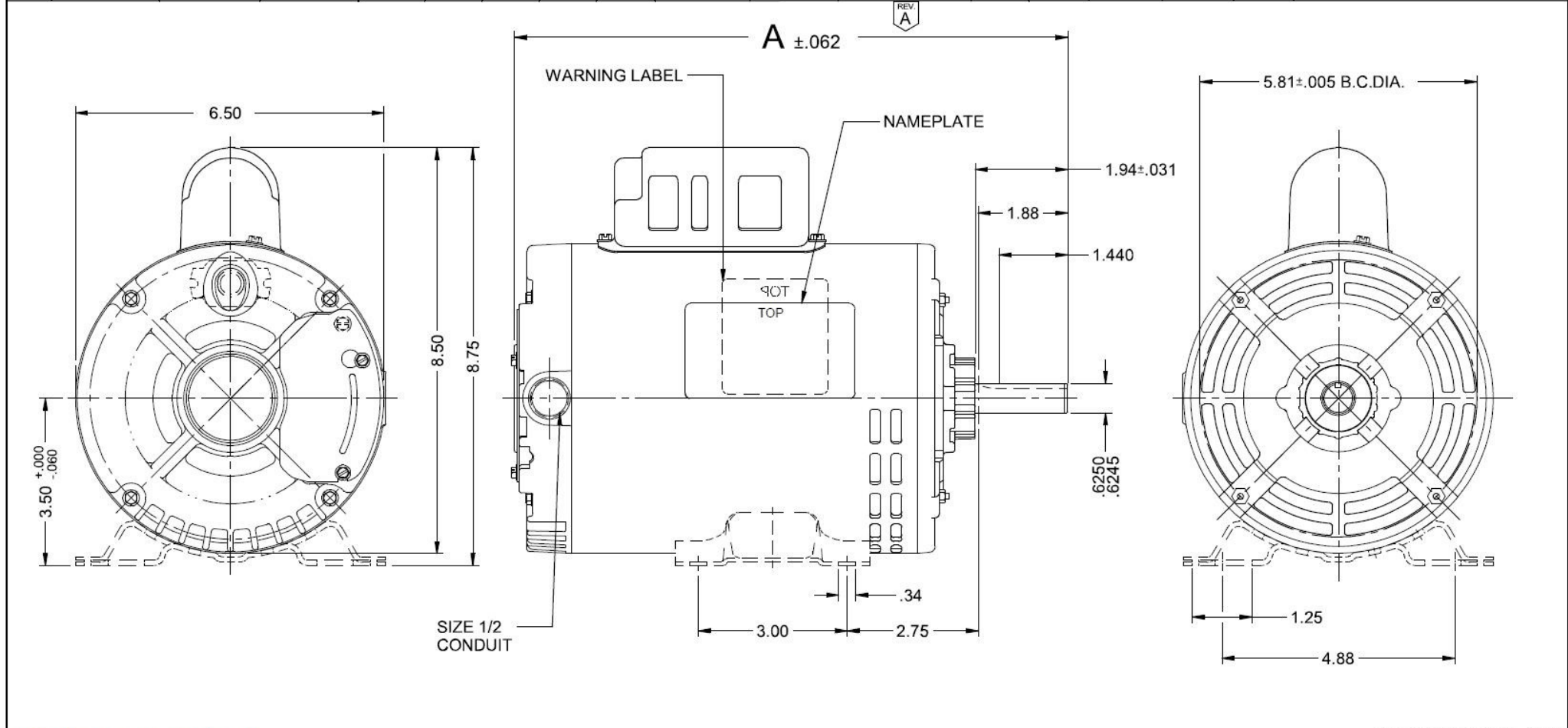


VAR	MODEL	CUSTOMER	CAT. NO.	A	B	C	D	HP	VOLTS	SF	AMPS	HZ	RPM	BASE REQUIREMENT	CONN VOLTS	PROT.	DESCRIPTION/REMARKS
001	C63FFA-1302	USEM	--	10.89	--	--	--	1/2	115/208-230	--	9.6/4.8-4.8	60	1725	STD N56	HIGH VOLTAGE	NONE	
002	C63FEZ-1301	USEM	--	11.39	--	--	--	1	115/208-230	--	14.6/6.9-7.3	60	3450	STD N56	HIGH VOLTAGE	NONE	
003	C63FEY-1300	USEM	--	11.39	--	--	--	3/4	115/208-230	--	10.4/5.3-5.2	60	3450	STD N56	HIGH VOLTAGE	NONE	



NIDEC MOTOR CORPORATION 30-Jun-17			REFER TO S.E.I.M. 24-1		
REVISION RECORD FOR:		ECO: E29037	NIDEC MOTOR CORPORATION		
IT WAS UPDATED AMPS IN VARIATION 001 IN PAGE 1 AND 2		TOLERANCES ON DIMENSIONS (UNLESS OTHERWISE SPECIFIED)	INFORMATION DISCLOSED ON THIS DOCUMENT IS CONSIDERED PROPRIETARY AND SHALL NOT BE REPRODUCED OR DISCLOSED WITHOUT WRITTEN CONSENT OF NIDEC MOTOR CORPORATION		
		INCHES .XX = ± .010 .XXX = ± .005	mm	TITLE	REVISION DATE: 30-JUN-17
ISSUED BY: F. GARCIA	ENGINEER APPROVED: M. SCHUETTE	ANGLES X° = ± 1°		CUSTOMER DETAIL DRAWING	REV A
				CODE V02	SHEET NUMBER 1 OF 6
				ITEM NO. 805153	DWG SIZE B